



Sustainability in Action

Morris County Utilities Authority (MCMUA) Presentation

Andie Holt, General Manager

Eric Gabrielson, Operations Manager

Angela Celeste, Municipal Services Manager

What we're covering

- 01** Intro & Our Values
- 02** Overview of our Mine Hill Facility
- 03** Safety and Hazards
- 04** Recent Industry Trends

- WHO WE ARE

Our Values

Safe

We protect the livelihoods of our colleagues and communities.

Committed to Serve

We go above and beyond to exceed our customers' expectations.

Environmentally Responsible

We take action to improve our environment.

Driven

We deliver results in the right way.

Human-centered

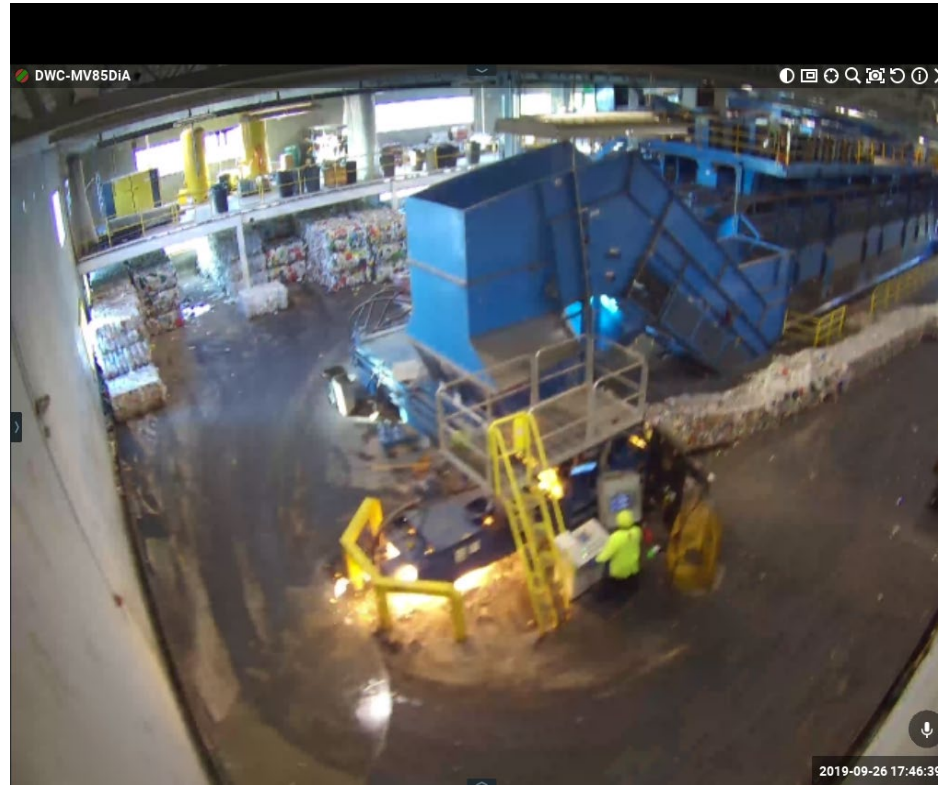
We respect the dignity and unique potential of every person.

Mine Hill Recycling Facility

- Began operation in 1990's as dual stream CM processor
- Won Morris Co. MUA single stream bid and opened SS facility in 2011 as ReCommunity/FCR Morris
- Upgraded CM facility in 2016 after 2014 roof collapse
- Comprised of 2 buildings encompassing approx. 65,000 sq.ft.
- Fully staffed at 46 people including 31 sorters & baler operators
- Processing 210 tons per day at present
- Looking at various upgrades to improve sort quality

Safety and Hazards

Scrap Metal Containers – Solvents, Paints



Safety and Hazards

Batteries



This battery was found after the baler ejected the bale. It was sprayed immediately and continuously until the smoke subsided.

Safety and Hazards

Batteries, continued.



This laptop battery was spotted on the incline belt by a loader. It was successfully extinguished by presort personnel.

Safety and Hazards

Batteries, continued.



This lithium-ion battery was removed from the tip floor by a wheel loader and extinguished immediately.

Recent Industry Trends – Dual vs. Single Stream



Single Stream Pros

- Hauling cost savings
- Residents enjoy simplicity of one collection day and one can
- Convenience encourages more recycling tons
- Current facility infrastructure supports SS
- Landfill Diversion
 - Morris County tip fee \$111.25 type 10 MSW

Single Stream Cons

- Public perception and reputation of high contaminants – not always accurate
- High Processing Cost

Recycling *Simplified*

Recent Industry Trends – Bottle Bill

What it means for residents

- Increase storage for recycling at home
- Personal time impact - responsible for transporting their bottles to redemption centers
- Government keeps money for unclaimed bottles ~ tax

What it means for haulers

- Decrease in material, but hauling remains the same
- Fuel, labor costs, and carbon footprint remain the same

What it means for recyclers

- Devalued recycling stream
- Devalued revenue share
- Still need to recycling non-redeemables i.e., glass jars, wine bottles, HDPE, #5s



Angela Celeste

Manager – Municipal Services

e: ACeleste@RepublicServices.com

c: 908-339-5911

Andie Holt

General Manager – Northeast Recycling

e: Aholt3@RepublicServices.com

Eric Gabrielson

Operations Manager – Mine Hill Recycling Facility

e: egabrielson@RepublicServices.com

C: 973-580-5858



Member of
**Dow Jones
Sustainability Indices**

Powered by the S&P Global CSA

Sustainability Yearbook

Member 2023

S&P Global