



# Preventing Stormwater Pollution in Morris County

Kevin Stephens

Assistant Planner

Morris County Division of Engineering and Transportation

# Background/Rules and Regulations

---



December 1999: The US Environmental Protection Agency publishes Phase II Rule.



February 2004: The New Jersey Department of Environmental Protection issues final Storm Water Rules and four NJPDES general permits:

Tier A municipalities  
Tier B municipalities  
**Highway Agencies**  
**Public Complexes**

# Morris County's Stormwater Management Practices

- Local Public Education & Outreach
- Managing Storm Drain Inlets
- Street Sweeping
- MS4 Infrastructure Map
- Staff Training





# Local Public Education & Outreach

- Developing a dedicated Storm Water Webpage
- Public Complex SPCs can choose from a variety of categories including:
  - School/Youth Events
  - Watershed/Regional Collaborations
  - Community Events
- Canal Day
  - Great event to educate businesses and the public on the hazards of illicit connections and improper disposal of waste.



# Managing Storm Drain Inlets & Catch Basins

- Morris County is required to inspect, clean, and maintain all storm drain inlets and catch basins on County roadways.
- All inlets must be retrofitted to keep pollution out of the MS4
  - For instance, both grate and curb openings may need to be replaced during repaving.
  - All new inlets must have a catch basin or other BMP for solids collection.

## Public Complex:



### ▪ Storm Drain Inlets

- Inspect ALL every year
- Define cleaning and maintenance conditions to ensure proper operation

### ▪ Catch Basins

- Inspect ALL every year
- Define cleaning and maintenance conditions to ensure proper operation

## Public Complex



- **Conduct dry weather inspections of all open & piped MS4 outfalls**
  - Inspect ALL each year
  - Stream scouring
  - Illicit discharges
- **Inspect new and newly identified outfalls within 30 days**
- **Must attach Outfall Inspection Forms to Annual Report**



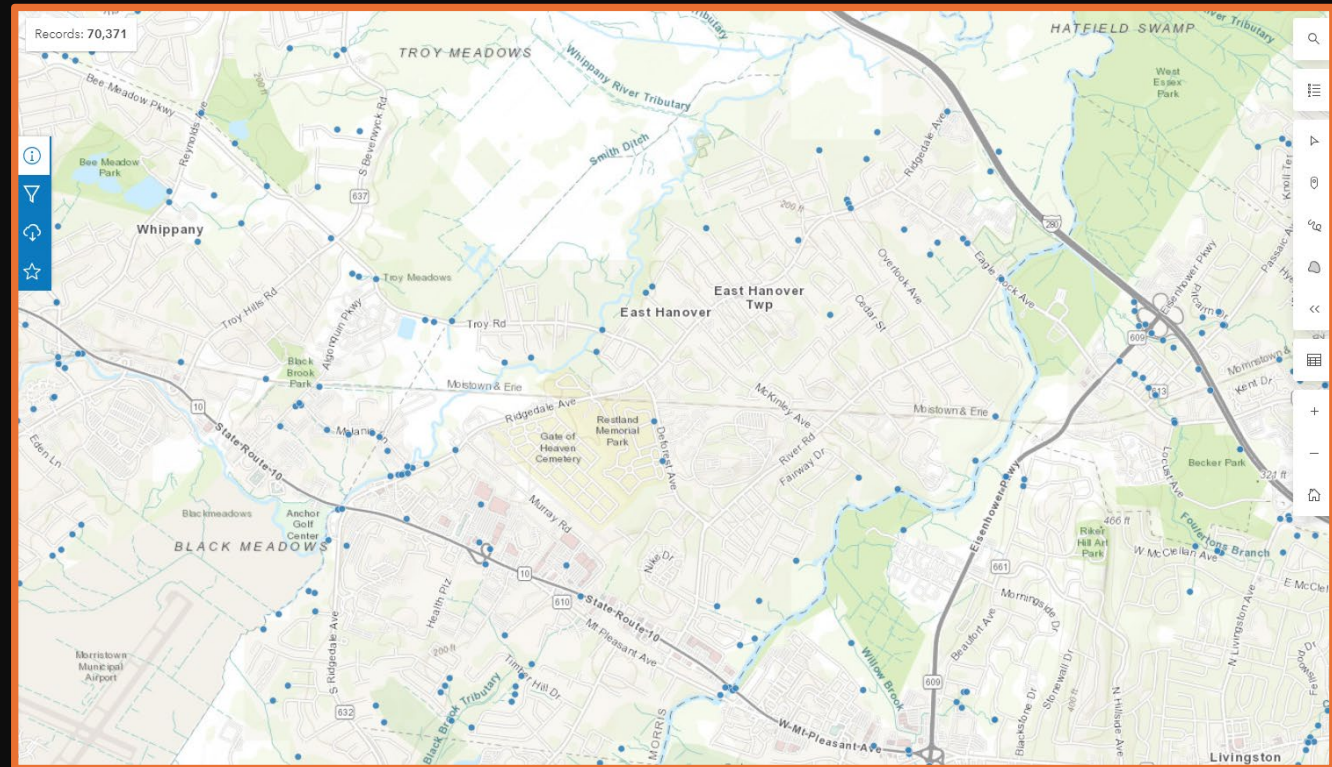
# Street Sweeping

- Importance:
  - Reduces the amount of dirt, debris, and litter that enters the stormwater system.
  - Reduces flooding due to clogged storm drains.
  - Reduces catch basin cleaning.
- Clean Communities Report
- Public Complex:
  - Monthly sweeping of paved areas with storm drain inlets that drain to surface water.




# MS4 Infrastructure Map

- Posted on Morris County's dedicated stormwater website.
- Required attributes include:
  - MS4 outfalls
  - Storm drain inlets
  - Manholes
  - Stormwater facilities
  - Pump stations



A large orange circle is positioned on the left side of the slide, partially cut off by the edge.

# Staff Training

- SPCs attend annual NJDEP training sessions on responsibilities including:
    - Stormwater Pollution Prevention Plan
    - Good Housekeeping
    - MS4 Mapping
  - Public Complex Employee Training
    - Morris County Road Division Employees attend annual BMP Storm Water Training.
- 
- A series of four blue curved line segments are arranged in a dashed, upward-curving path in the bottom right corner of the slide.



# Good Practices for the Local Community

- If you have hazardous products in your home or workplace, make sure you store or dispose of them properly. Read the label for guidance.
- Use natural or less toxic alternatives when possible.
- Recycle used motor oil.
- Contact your municipality, county or facility management office for the locations of hazardous-waste disposal facilities.



## Keep pollution out of storm drains

- Municipalities and many other public agencies are required to mark certain storm drain inlets with messages reminding people that storm drains are connected to local waterbodies.
- Do not let sewage or other wastes flow into a stormwater system.

## Clean up after your pet

- Many municipalities and public agencies must enact and enforce local pet-waste rules.
- An example is requiring pet owners or their keepers to pick up and properly dispose of pet waste dropped on public or other people's property.
- Make sure you know your town's or agency's requirements and comply with them. It's the law. And remember to:
  - Use newspaper, bags or pooper-scoopers to pick up wastes.
  - Dispose of the wrapped pet waste in the trash or unwrapped in a toilet.
  - Never discard pet waste in a storm drain.

## Don't feed wildlife

- Do not feed wildlife, such as ducks and geese, in public areas.
- Many municipalities and other public agencies must enact and enforce a rule that prohibits wildlife feeding in these areas.



## Don't litter

- Place litter in trash receptacles.
- Recycle. Recycle. Recycle.
- Participate in community cleanups.

## Dispose of yard waste properly

- Keep leaves and grass out of storm drains.
- If your municipality or agency has yard waste collection rules, follow them.
- Use leaves and grass clippings as a resource for compost.
- Use a mulching mower that recycles grass clippings into the lawn.



## Contact information

For more information on stormwater related topics, visit [www.njstormwater.org](http://www.njstormwater.org)

Additional information is also available at U. S. Environmental Protection Agency Web sites [www.epa.gov/npdes/stormwater](http://www.epa.gov/npdes/stormwater) or [www.epa.gov/nps](http://www.epa.gov/nps)  
New Jersey Department of Environmental Protection  
Bureau of NJPDES Stormwater Permitting and Water Quality Management  
Municipal Stormwater Regulation Program  
(609) 633-7021



[www.cleanwater.nj.org](http://www.cleanwater.nj.org)



## A Guide to Healthy Habits for Cleaner Water

Pollution on streets, parking lots and lawns is washed by rain into storm drains, then directly to our drinking water supplies and the ocean and lakes our children play in. Fertilizer, oil, pesticides, detergents, pet waste, grass clippings: You name it and it ends up in our water.

Stormwater pollution is one of New Jersey's greatest threats to clean and plentiful water, and that's why we're all doing something about it.

By sharing the responsibility and making small, easy changes in our daily lives, we can keep common pollutants out of stormwater. It all adds up to cleaner water, and it saves the high cost of cleaning up once it's dirty.

As part of New Jersey's initiative to keep our water clean and plentiful and to meet federal requirements, many municipalities and other public agencies including colleges and military bases must adopt ordinances or other rules prohibiting various activities that contribute to stormwater pollution. Breaking these rules can result in fines or other penalties.



**As a resident, business, or other member of the New Jersey community, it is important to know these easy things you can do every day to protect our water.**

## Limit your use of fertilizers and pesticides

- Do a soil test to see if you need a fertilizer.
- Do not apply fertilizers if heavy rain is predicted.
- Look into alternatives for pesticides.
- Maintain a small lawn and keep the rest of your property or yard in a natural state with trees and other native vegetation that requires little or no fertilizer.
- If you use fertilizers and pesticides, follow the instructions on the label on how to correctly apply it.



Make sure you properly store or discard any unused portions.

## Properly use and dispose of hazardous products

- Hazardous products include some household or commercial cleaning products, lawn and garden care products, motor oil, antifreeze, and paints.
- Do not pour any hazardous products down a storm drain because storm drains are usually connected to local waterbodies and the water is not treated.

---

# Contact Information

---

Email:  
[kstephens@co.morris.nj.us](mailto:kstephens@co.morris.nj.us)

Phone: 973-285-6778

Office: 30 Schuyler Place,  
Morristown, 3<sup>rd</sup> Floor Room  
333

# Sources:

- <https://www.morriscountynj.gov/Departments/Engineering-Transportation/Stormwater-Information>
- <https://dep.nj.gov/njpdes-stormwater/municipal-stormwater-regulation-program/highway-agency-stormwater-permit/>
- <https://dep.nj.gov/njpdes-stormwater/municipal-stormwater-regulation-program/>
- <https://dep.nj.gov/njpdes-stormwater/municipal-stormwater-regulation-program/outreach-material/>